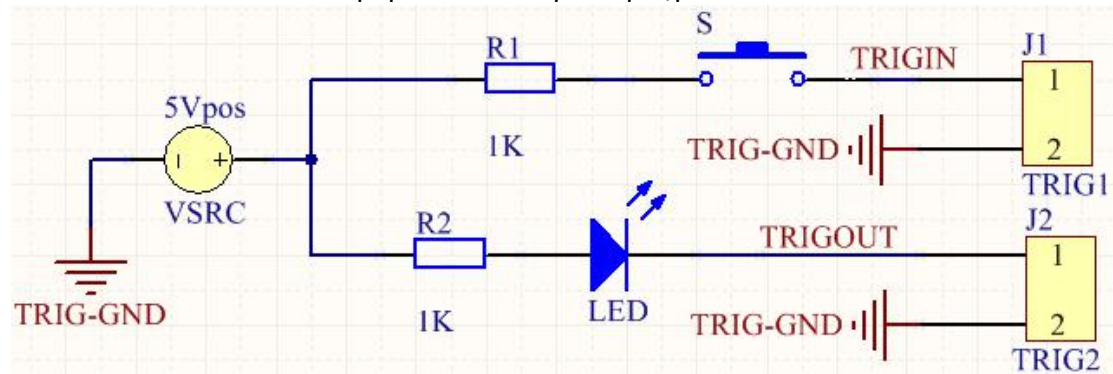


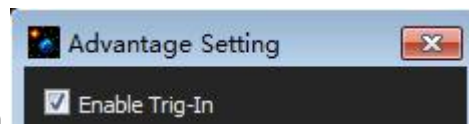
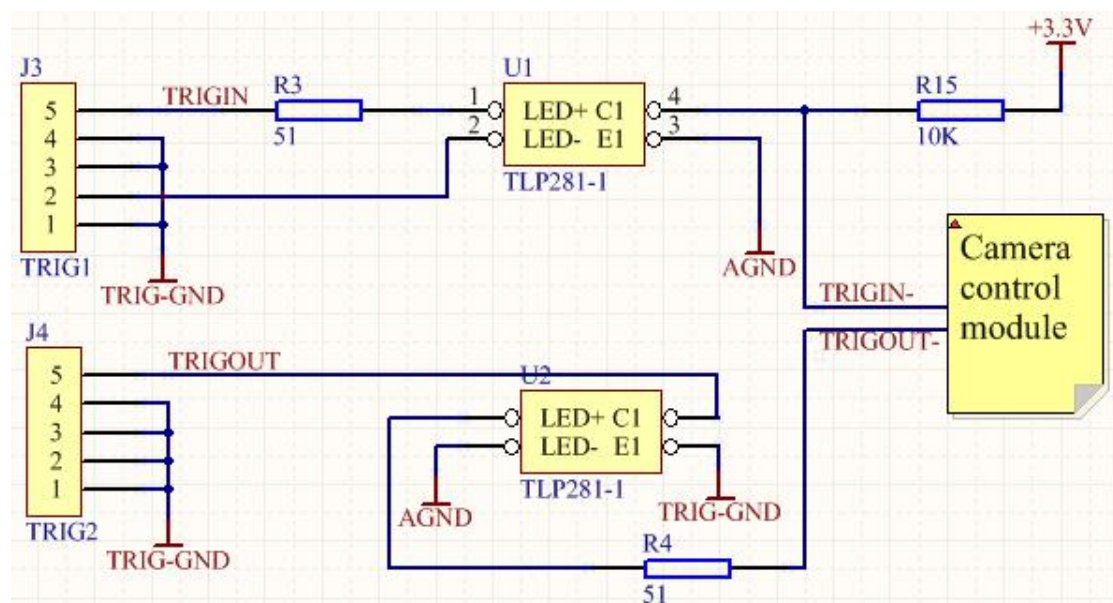
## QHY Camera external TRIG control manual

QHY Camera in order to achieve use external equipment control camera capture, add the external TRIG control function. currently support external TRIG function QHY Camera is: QHY21/22/23、IC8300、IC16803、QHY90A、QHY16200A、QHY695A/814A、QHY11、QHY27/28/29

About the external TRIG equipment work principle, please refer to the follow circuit:



About the camera TRIG module work principle, please refer to the follow circuit:



After you choose camera TRIG function ,when you close S switch,while camera J3 received TRIGIN signal,camera J4 will send a low signal to external equipment,make the LED light until exposure to end.